

Department of Engineering
Tim Bryan, P.E., PTOE, County Engineer

3137 South Liberty Street, Canton, MS 39046
Office (601) 855-5582 FAX (601) 859-5857

MEMORANDUM

October 30, 2024

To: Casey Brannon, Supervisor, District I
Trey Baxter, Supervisor, District II
Gerald Steen, Supervisor, District III
Karl Banks, Supervisor, District IV
Paul Griffin, Supervisor, District V

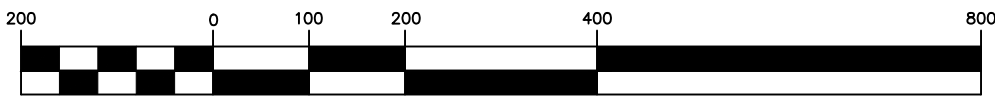
From: Tim Bryan, P.E., PTOE
County Engineer

Re: Preliminary Plat
The Crossroads

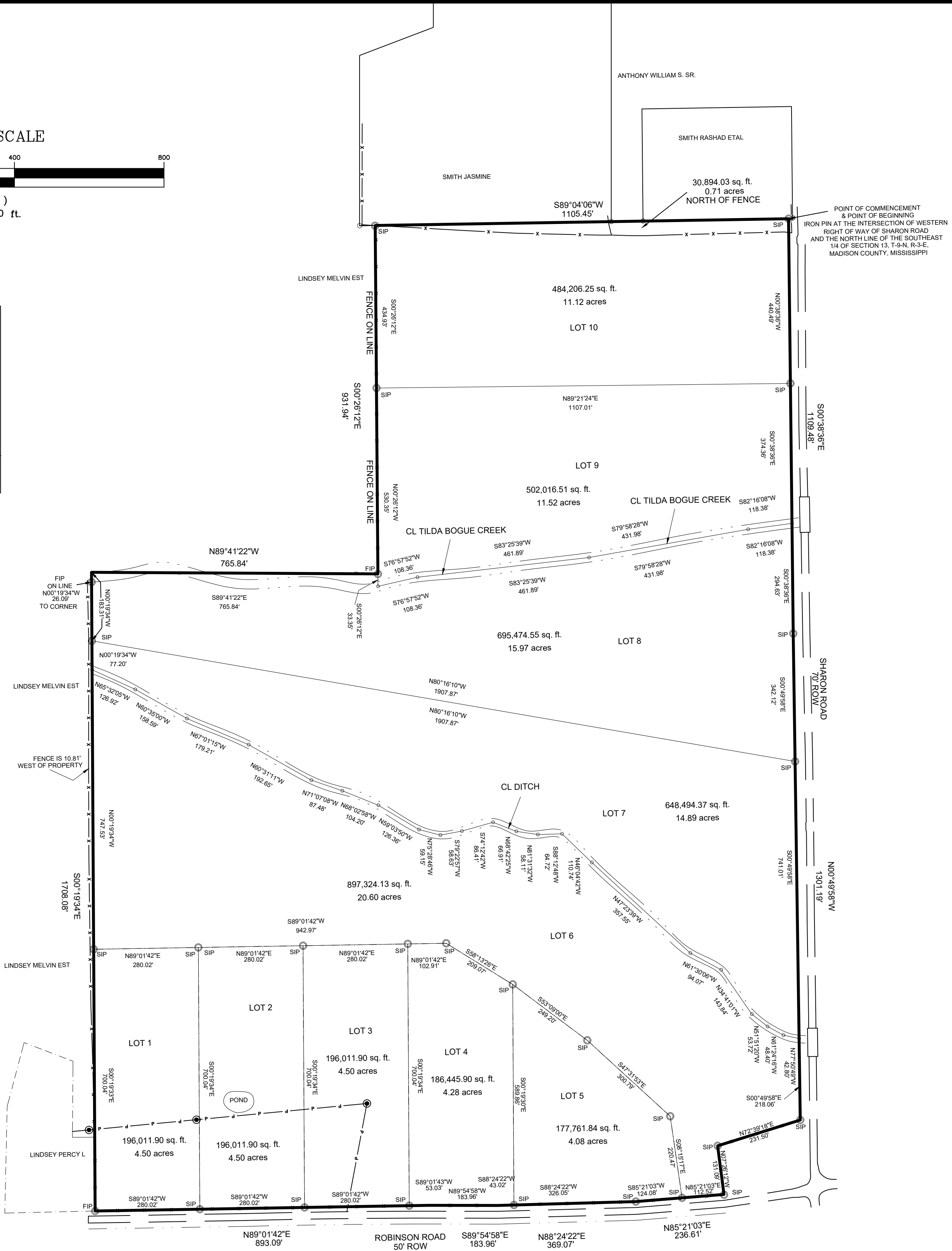
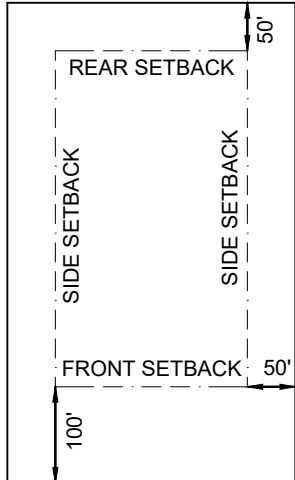
The Engineering Department recommends approval of the preliminary plat of The Crossroads. The development is 10 lots on approximately 95.95 acres. There is no public county infrastructure associated with this development.



GRAPHIC SCALE



(IN FEET)
1 inch = 200 ft.



PRELIMINARY PLAT

PART OF SOUTHEAST 1/4 OF SEC 13
T-9-N R-3-E

MADISON COUNTY, MISSISSIPPI

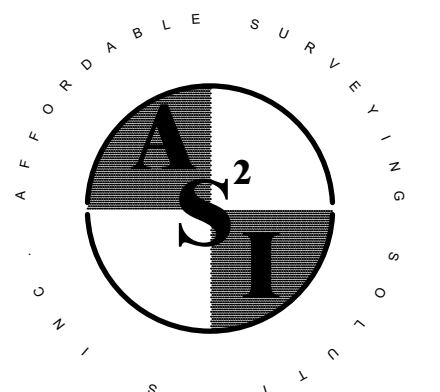
* * * * *

THE CROSSROADS

SITUATED IN SE 1/4 SEC.13
T-9-N, R-3-E, CITY OF MADISON,
MADISON COUNTY, MS

* * * * *

DRAWN BY: DME	DATE OF SURVEY: 05/15/24 DATE OF PLAT: 06/10/24	SURVEY CLASS: B
CHECKED BY: RTE	SCALE: 1" = 200'	JOB #: AS-438-01-24



452 HOLLY HEDGE DRIVE
MADISON, MS 39110

CELL (601)954-3785
FAX (601) 853-4956
romans58@comcast.net